



Ripon Close | | Camberley | GU15 1BP

Price Guide £450,000 Freehold

Waterford's W
Residential Sales & Lettings

Ripon Close |
Camberley | GU15 1BP
Price Guide £450,000

Situated in a no through road on the popular Heatherside development, this 3 bedroom linked-detached home enjoys a secluded rear garden and benefits from a garage and utility room. No onward chain.

- 3 bedrooms
- Kitchen
- Modern shower room
- Garage
- 21ft living/dining room
- Utility room
- Secluded garden
- No through road

Accommodation

The front door opens to an entrance hall with a downstairs cloakroom, a door opens to the dual aspect L-shaped living room, patio doors open to the rear. The kitchen has a good range of cabinets, a range of appliances and a glazed door opens to the utility room and a door gives access to the garage.



No onward chain



Outside

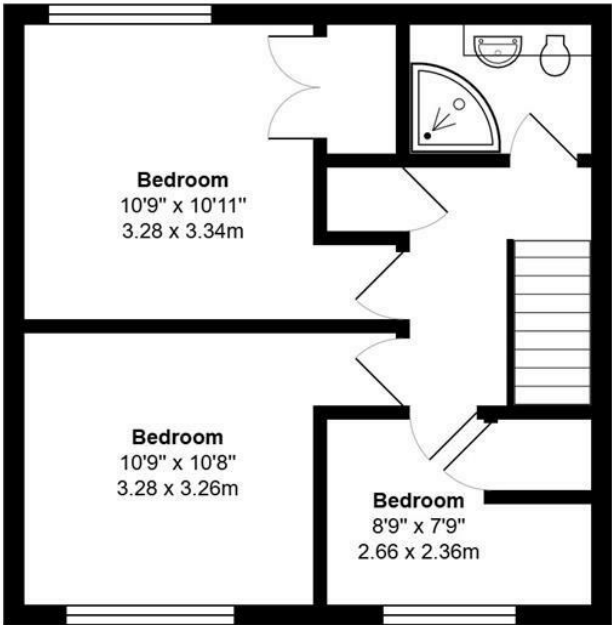
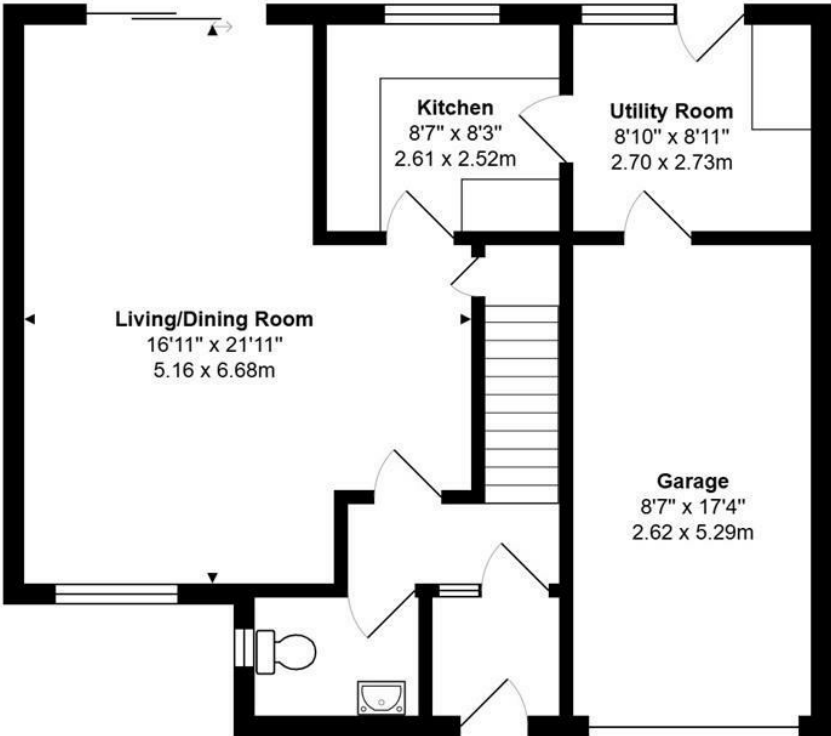
The property is approached by a driveway leading to the garage, a small lawned area with path gives access to the front door. The secluded rear garden has a full width patio and leads to a level lawn enclosed by timber fences and bordered by a variety of planting. A door gives access to the utility room.

Location

The property is located in a no through road on the popular and established Heatherside development with a range of facilities including a Sainsbury's Local, Easy access to great commuter links via the A30/M3 and excellent local schools including Ravenscote



Ripon Close, Camberley, GU15 1BP



Total Area: 1168 ft² ... 108.5 m² Including Garage

All measurements are approximate and for display purposes only

Energy Efficiency Rating		Current	Potential
Very energy efficient - lower running costs			
(92 plus)	A		
(81-91)	B		
(69-80)	C		
(55-68)	D		
(39-54)	E		
(21-38)	F		
(1-20)	G		
Not energy efficient - higher running costs			
England & Wales		EU Directive 2002/91/EC	

27 High Street
 Camberley
 Surrey
 GU15 3RB
 01276 66566
 camberley@waterfords.co.uk